

A dramatic sunset or sunrise over a body of water. The sun is partially obscured by large, dark, textured clouds, creating a bright, glowing effect. The sky is filled with these clouds, and the horizon line is visible in the lower third of the image. The water in the foreground is dark and has a textured surface with small waves.

**Welcome**  
**CMMC – Great Lakes Division**



# **Ships With a Mission**

**CMMC – Great Lakes Division**

**Bret Maukonen**

# **Ships With a Mission**

Looking at ships engaged in specialized humanitarian and educational missions



# Ships With a Mission

Operated by:

- Youth With a Mission (YWAM),
  - Mercy Ships, and
- Operation Mobilization (OM Ships)





**Ships With a Mission**

**YWAM Ship**

# Youth With a Mission Medical Services

3-page handout on:

- the ship,
- the area of operation,
  - services,
  - staffing, and
  - operations

# Medical Ship – YWAM PNG





# Medical Ship – YWAM PNG

## SHIP FEATURES

**Built:** Western Australia, 1999

**Flag:** Cook Islands

**Length:** 60 metres

**Breadth:** 15 metres

**Draft:** 2.1 metres

**Propulsion:** Fixed props

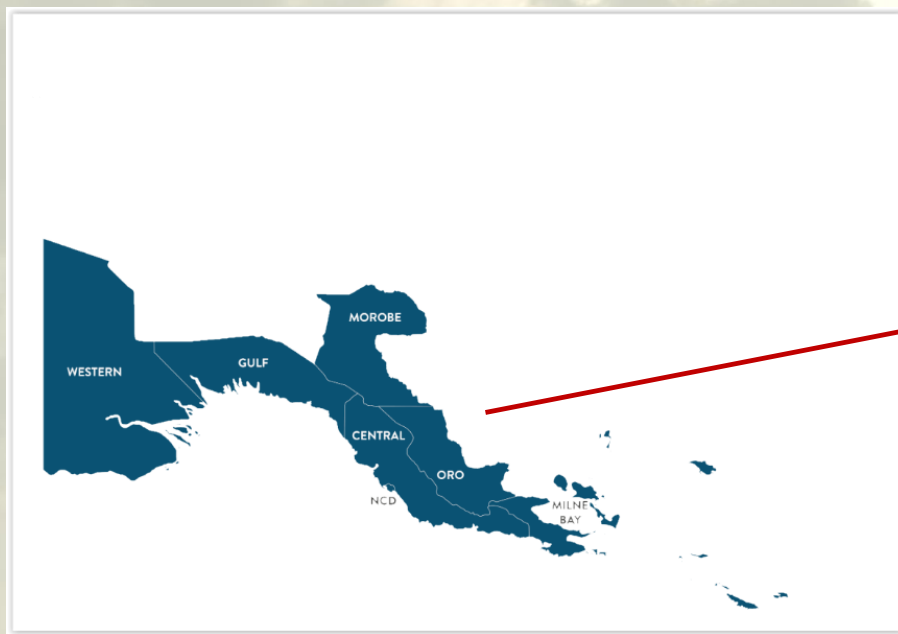
**Engines:** 2 x MTU 12v2000 (1,576 kW)

**Speed:** 12.5 knots

**GRT:** 1,520 mt

**Capacity:** 130 berths

# Video Tour of Medical Ship – YWAM PNG





## Video of Outreach to a Remote Community – YWAM PNG





# **Ships With a Mission**

## **Mercy Ships**

# Mercy Ships

Mercy Ships is an international humanitarian organization that uses hospital ships to deliver free, world-class healthcare services and medical capacity building in the world's poorest nations.

Founded in 1978 by Don and Deyon Stephens, Mercy Ships has worked in over 70 countries, providing \$1.53 billion in services to more than 2.71 million direct beneficiaries.



# Mercy Ships

92,296+  
surgical procedures performed since 1978.

41,540+  
health care professionals trained since 1978.

1,100+  
volunteers from 62 nations onboard  
the Africa Mercy every year.

# **Mercy Ships**

(from present to origins)

7-page handout:

- Global Mercy,
- Africa Mercy,
- Anastasia, and
- Good Samaritan / Island Mercy

# Medical Ship – Global Mercy

(artist's concept)





# Medical Ship – Global Mercy

## SHIP FEATURES

**Built:** China (in process)

**Flag:** Malta

**Cargo:**

**Length:** 174.0 metres

**Breadth:** 28.6 metres

**Draft:** 6.1 metres

**Propulsion:** Azipod® C gearless, steerable, diesel-electric propulsion system

**Speed:** 12 knots

**GRT:** 36,600 mt

**DWT:** 4,300 mt

## Video Preview of Medical Ship – Global Mercy

# Medical Ship – Africa Mercy





# Medical Ship – Africa Mercy

## SHIP FEATURES *(in operation 1999 to present)*

<b>Built:</b>	Denmark, 1980 (rebuild, 1999)	<b>Flag:</b>	Malta	<b>Cargo Capacity:</b>	holds – 111 m <sup>3</sup>
<b>Length:</b>	152.0 metres	<b>Breadth:</b>	23.7 metres	<b>Draft:</b>	6.0 metres
<b>Propulsion:</b>	2 x CP props	<b>Engines:</b>	4 x B&W diesels (3120 KW each)		
<b>Speed:</b>	18.5 knots	<b>Gross Tonnage:</b>	16,572 mt	<b>Capacity:</b>	474 berths

# Video Overview of Medical Ship – Africa Mercy



# Video Medical Ship – Africa Mercy in Drydock in Las Palmas



# Medical Ship – Africa Mercy



# Africa Mercy in Cameroon



# Africa Mercy in Guinea





# Africa Mercy in Senegal



# Medical Ship – Caribbean Mercy



# Medical Ship – Caribbean Mercy

## SHIP FEATURES

**Built:** Denmark, 1952

**Flag:** Panama

**Cargo Capacity:** 688 m<sup>3</sup>

**Length:** 80.0 metres

**Breadth:** 12.2 metres

**Draft:** 5.18 metres

**Propulsion:** fixed

**Engines:** 1 MAK diesel (3.670 BHP)

**Speed:**

**Gross Tonnage:** 2,125 mt

**Capacity:** 120 berths



# Medical Ship – Anastasia



# Medical Ship – Anastasia (Gk. “Resurrection”)

## SHIP FEATURES

**Built:** Italy, 1953

**Flag:** Malta

**Cargo Capacity:** 3 holds – 3,060 m<sup>3</sup>

**Length:** 159.0 metres

**Breadth:** 20.73 metres

**Draft:** 7.2 metres

**Propulsion:** 2 propellers

**Engines:** 2 x Fiat 7,510 (8,050 BHP each)

**Speed:** 18.5 knots

**Gross Tonnage:** 11,701 mt

**Capacity:** 420 berths

# Medical Ship – Good Samaritan





# Medical Ship – Good Samaritan / Island Mercy

## SHIP FEATURES

**Built:** Saint John, NB, 1961

**Flag:** Panama

**Cargo Capacity:** 59 m<sup>3</sup>

**Length:** 57.30 metres

**Breadth:** 11.58 metres

**Draft:** 3.96 metres

**Propulsion:**

**Engines:** 2 Crossley diesels (1,100 BHP each)

**Speed:**

**Gross Tonnage:** 998 mt

**Capacity:** 80 berths





**Ships With a Mission**

**OM Ships**

# Operation Mobilization

5-page handout:

- Logos,
- Doulos,
- Logos II, and
- Logos Hope

# Video Preview of OM Ships

# OM Ship – Logos





# OM Ship – Logos (Gk. “Word”)

## SHIP FEATURES

Built: Denmark, 1949

Flag: Singapore

Cargo: 1,325 <sup>m</sup>3

Length: 83.0 metres

Breadth: 13.44 metres

Draft: 5.5 metres

Propulsion: single fixed prop    Engines: B+W 6 Cyl. 2 stroke 2300 IHP @150 rpm

Speed:

GRT: 2,319 mt

Dwt: 1,730 mt

# OM Ship – Logos aground and abandoned



# OM Ship – Logos II



# OM Ship – Logos II

## SHIP FEATURES

**Built:** Spain, 1968

**Flag:** Malta

**Cargo:** 9,14 <sup>m3</sup>

**Length:** 109.55 metres

**Breadth:** 16.3 metres

**Draft:** 5.12 metres

**Propulsion:**

**Engines:** B+W in-line 10 cyl. 2-stroke (6240 bhp)

**Speed:**

**GRT:** 4,804 mt

**Dwt:** 1,654 mt



# OM Ship – Doulos

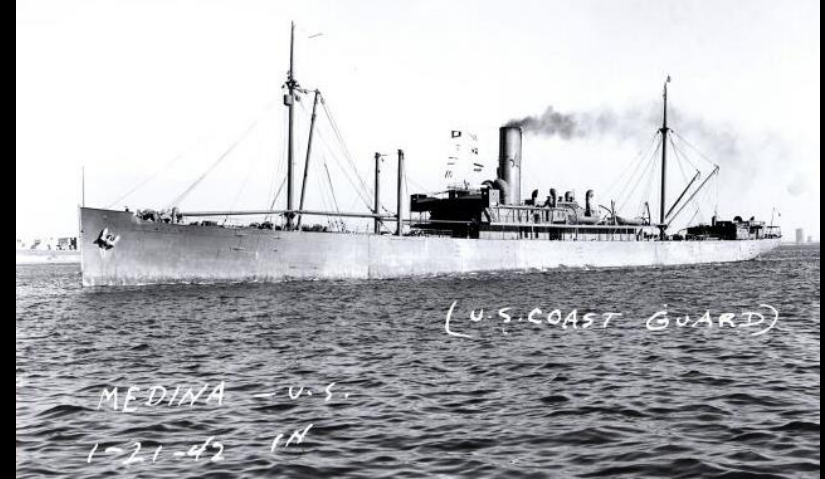
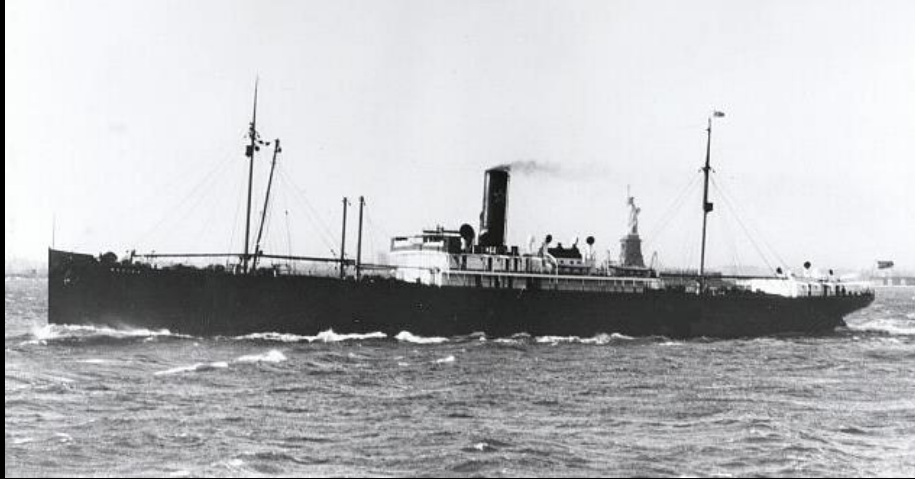


# OM Ship – Doulos (Gk. “Servant”)

## SHIP FEATURES *(in operation 1970 to 1988)*

<b>Built:</b>	1914, Newport News, USA	<b>Flag:</b>	Malta	<b>Cargo Capacity:</b>	1037 m <sup>3</sup>
<b>Length:</b>	130.35 metres	<b>Breadth:</b>	16.60 metres	<b>Draft:</b>	5.54 metres
<b>Propulsion:</b>	<b>Engines:</b> GMT V-18 cyl., 4-stroke, 5958 kW (8100 bhp)				
<b>Speed:</b>	<b>GRT:</b>	6,818 mt	<b>DWT:</b>	2,055 mt	<b>Capacity:</b> 414 berths

# Metamorphosis of a Ship – Doulos





# OM Ship – Doulos





# OM Ship – Logos Hope



# OM Ship – Logos Hope

## SHIP FEATURES

**Built:** Germany, 1973

**Flag:** Malta

**Cargo:** 1,100 <sup>m3</sup>

**Length:** 132.5 metres

**Breadth:** 21.06 metres

**Draft:** 5.22 metres

**Propulsion:** 2 x CPP;  
bow thruster

**Engines:** 4 X SWD 6-cylinder diesel (16,000 bhp)

**Speed:**

**GRT:** 12,519 mt

**DWT:** 1,533 mt

# Video Preview of Logos Hope Entering Drydock

# OM Ship – Logos Hope





# OM Ship – Logos Hope



# OM Ship – Logos Hope





# Logos Hope – Crowds





# Logos Hope – Crowds





# Logos Hope – Crew



# Logos Hope – Crew





# Logos Hope – Crew



# Logos Hope – Crew





# Logos Hope – Crew



# Logos Hope – Crew





# Logos Hope – Crew



# Logos Hope – Crew





# Logos Hope – Crew in MED Training





# Logos Hope – Crew in MED Training





# Logos Hope – The Theatre





# Logos Hope – Crew Entertaining





# Logos Hope – Crew



# Logos Hope – Crew





# Logos Hope – Crew meeting dignitaries





# Logos Hope – Crew meeting dignitaries





# Logos Hope – A visitor considering a purchase





# Logos Hope – Visitors considering purchases





# Logos Hope – Crew visiting an inland community



# Logos Hope – Crew testing for sight





# Logos Hope – Crew giving free footwear





# Logos Hope – Crew visiting the elderly



# Logos Hope – Crew doing children's ministry






# Logos Hope – Crew from many nations







# **Ships With a Mission**

**CMMC – Great Lakes Division**

***Thank you for attending!***